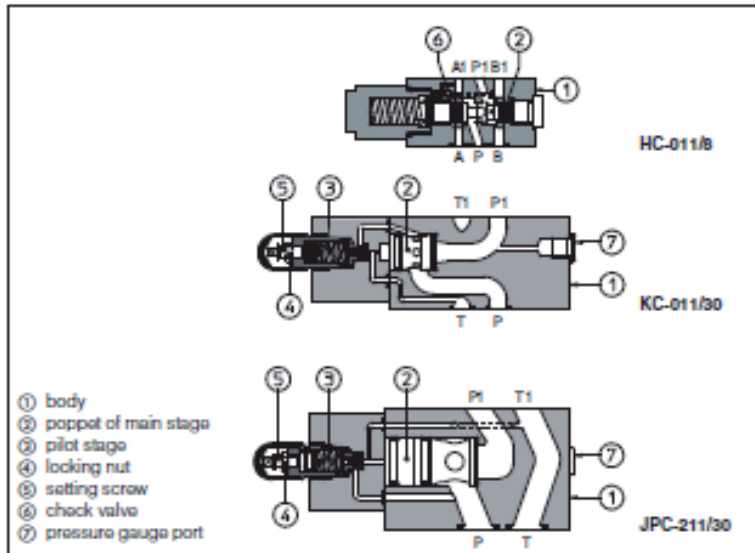


## Druckwaage / Balance de pression

### Modular pressure compensators type HC, KC, and JPC-2

ISO 4401 sizes 06, 10 and 16



HC, KC and JPC are two way pressure compensators for modular assembling with on/off and proportional directional control valves.

They keep a constant differential pressure ( $\Delta p$ ) across port P and port A or B in order to maintain a constant flow rate against pressure variations. Automatic piloting selection (③) is included.

Fixed  $\Delta p$  is available only for size 06. Adjustment of desired  $\Delta p$  is operated by loosening the locking nut (④) and turning the setting screw (⑤) of pilot device. Clockwise rotation increases  $\Delta p$ .

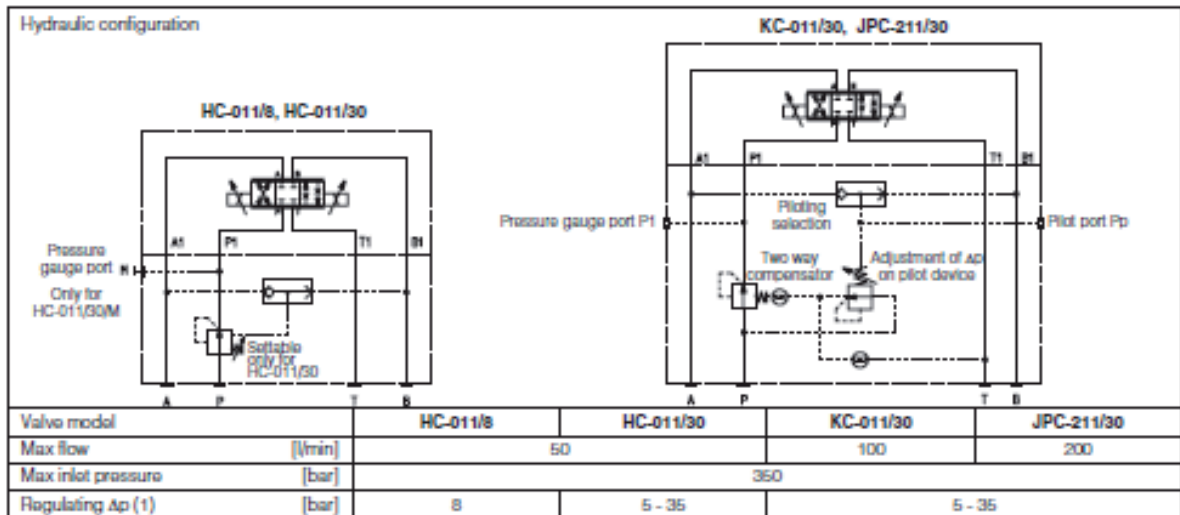
HC = size 06, flow up to 50 l/min.  
 KC = size 10, flow up to 100 l/min.  
 JPC = size 16, flow up to 200 l/min.

Mounting surface:  
 ISO 4401 size 06, 10, 16  
 Max pressure: 350 bar

#### 1 MODEL CODE

<b>HC-0</b>	-	<b>11</b>	/	<b>30</b>	/	<b>M</b>	/	<b>**</b>	/	<b>*</b>
Modular pressure compensator, size: HC-0 - 06 KC-0 - 10 JPC-2 - 16		Configuration, see section ② 11 = two way execution with constant $\Delta p$ between P port and user port		Option (only for HC-011/30) M = fit for manometer port P1		Series number		Seals material, see section ③: - = NBR PE = FKM BT = HNBR		
Fixed $\Delta p$ (only for size 06): 8 = 8 bar		Adjustable $\Delta p$ (for all sizes): 30 = 5 - 35 bar								

#### 2 HYDRAULIC CHARACTERISTICS



(1) The  $\Delta p$  for single flow path is fixed at 8 bar or is adjustable between 5 and 35 bar; it corresponds to values of total  $\Delta p$  across the valve of 16 bar or between 10 and 70 bar. Threaded plugged ports Pp and P1 are suitable for pressure adjustment or check of  $\Delta p$  value for single flow path (reading difference between Pp and P1 values).

