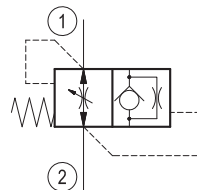


Hose burst check valve



Hose burst check valve  
with orifice

## Technical data

Max. operating pressure	bar (psi)	315 (4500)
Fluid temperature range	°C (°F)	-30 to 100 (-22 to 212)
Fluids	Mineral-based or synthetics with lubricating properties at viscosities of 10 to 500 mm <sup>2</sup> /s (cSt)	
Recommended degree of fluid contamination	Nominal value max. 10µm (NAS 8) ISO 4406 19/17/14	

0T.F4.01	X	Y	Z	*
----------	---	---	---	---

Insert type -  
Check, hose burst

Adjustments

= 03 Locking nut + counter nut  
see graphs ('R' - Q)

Port sizes

= 09 G 1/4

= 02 G 3/8

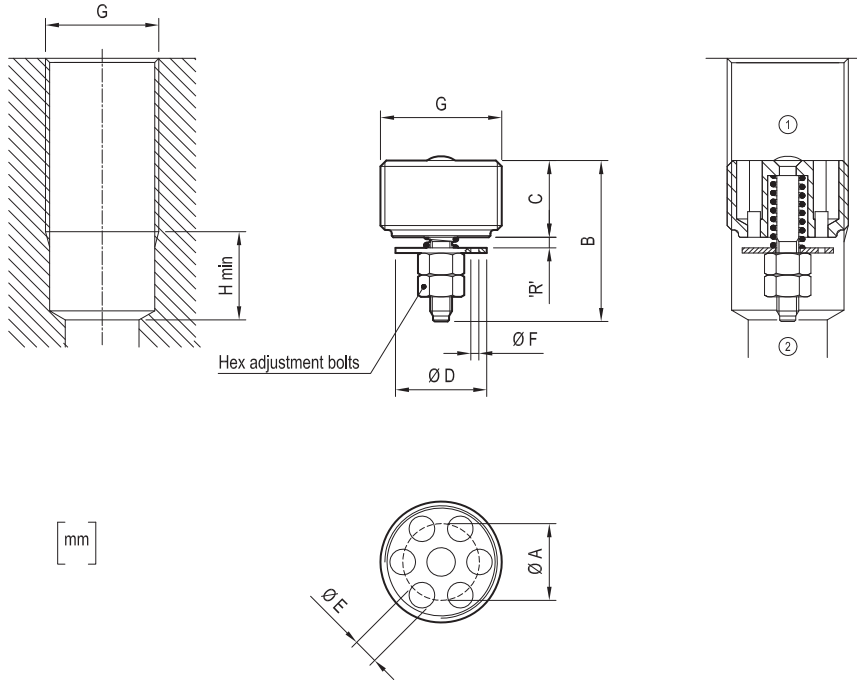
= 03 G 1/2

= 04 G 3/4

Series 0/A to L  
unchanged performances and dimensions

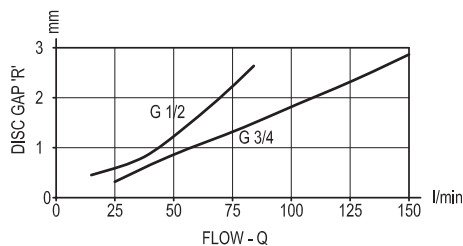
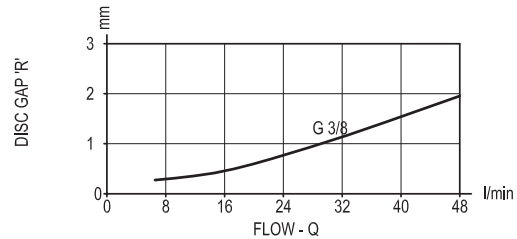
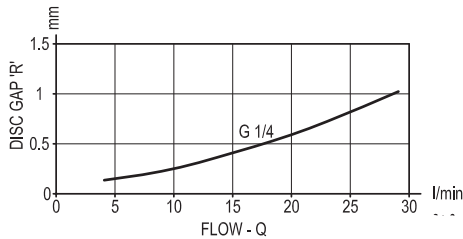
	Orifice diameter (mm)
= 00	no orifice
= 01	0.5
= 02	0.6
= 03	0.7
= 04	0.8
= 05	0.9
= 06	1
= 07	1.2
= 08	1.3
= 09	1.5
= 10	1.9
= 11	2

## Dimensions



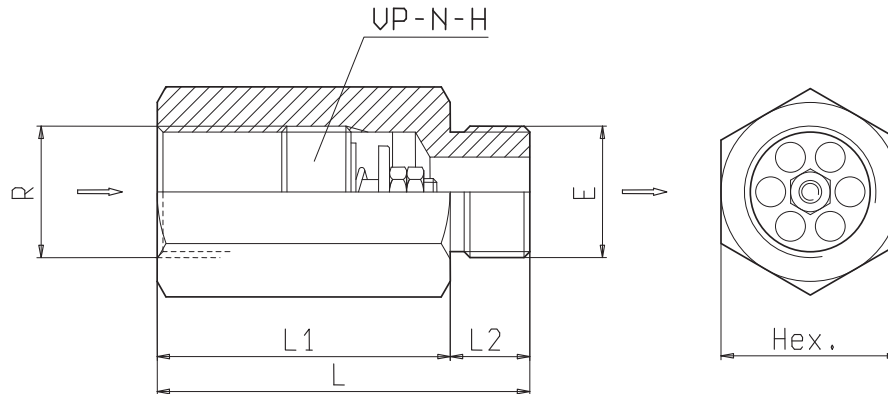
G *	A	B	C	D	E	F	H	Hex	Weight kg (lbs)	Inst. torque Nm (ft-lbs)	Flow max. l/min. (gpm)	
											min.	max.
G 1/4	8.5	17.5	8	9.5	2.4	on request	11	5.5	0.005	2 (1.5)	4 (1)	25 (7)
G 3/8	10.5	23	10.5	12.5	3.5	on request	11	5.5	0.010	3 (2)	6 (2)	50 (13)
G 1/2	13	25	12	15	4.5	on request	15	7	0.020	4 (3)	16 (4)	80 (21)
G 3/4	16	30.5	17	18.5	6	on request	16	7	0.042	10 (7)	25 (7)	150 (40)

\* Thread in accordance with ISO 228-1 Note: Metric versions available on request. Consult factory.

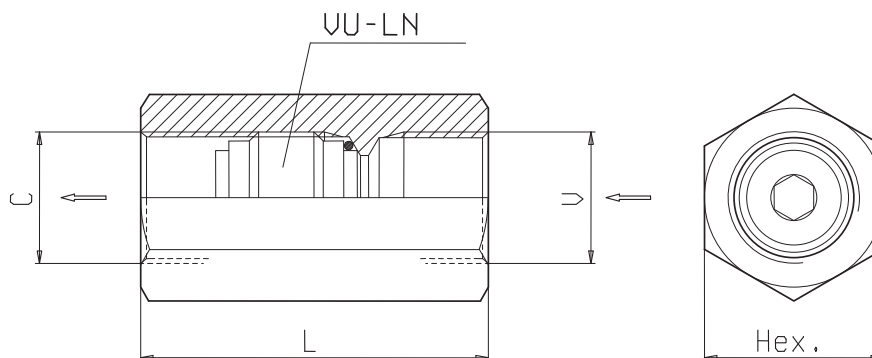


Performance curves R/flow (allowance can be  $\pm 10\%$  from the curve)  
After assembling the valve are preadjusted at the following values

0.5 mm for G 1/4 and G 3/8  
0.7 mm for G 1/2 and G 3/4



ORDERING CODE	PORTS E-R	Hex. mm	L mm	L1 mm	L2 mm	WEIGHT Kg	VALVES TO BE INSERTED
OC.51.01.014	G 1/4	19	50	40	10	0.060	OD.41.03.03.09.00
							VP - N - H - 14
OC.51.01.015	G 3/8	22	55	43	12	0.085	OD.41.03.03.02.00
							VP - N - H - 38
OC.51.01.016	G 1/2	27	70	56	14	0.190	OD.41.03.03.03.00
							VP - N - H - 12
OC.51.01.017	G 3/4	36	75	59	16	0.340	OD.41.03.03.04.00
							VP - N - H - 34



ORDERING CODE	PORTS E-R	Hex. mm	L mm	WEIGHT Kg	VALVES TO BE INSERTED
OC.51.02.001	G 1/4	19	48	0.050	OD.44.02.00.09.01
					VU - LN - 14
OC.51.02.002	G 3/8	22	52	0.075	OD.44.02.00.02.01
					VU - LN - 38
OC.51.02.003	G 1/2	27	62	0.170	OD.44.02.00.03.01
					VU - LN - 12
OC.51.02.004	G 3/4	36	70	0.300	OD.44.02.00.04.01
					VU - LN - 34