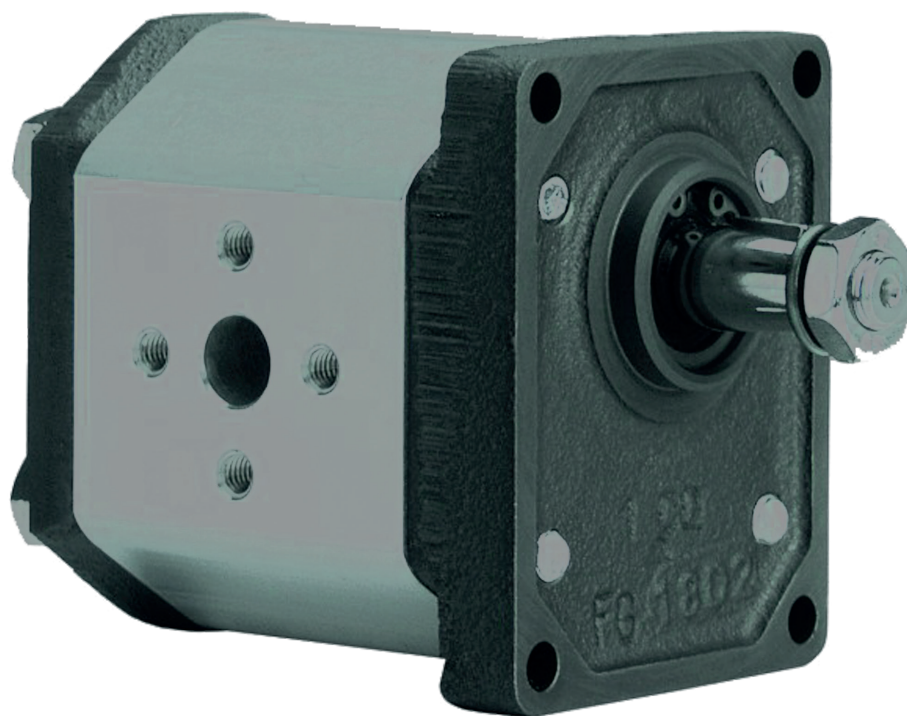


## Pompe ad ingranaggi gear pumps GHP1



## Pompe ad ingranaggi gear pumps

### GHP1

#### COME ORDINARE / HOW TO ORDER

GHP1	TIPO TYPE	ROTAZIONE ROTATION	TAGLIA SIZE	ALBERO* SHAFT*	PORTE* PORTS*	GUARNIZIONI* SEALS*	OPZIONI* OPTIONS*	DRENAGGIO* DRAIN*
	omit	D DESTRA CLOCKWISE	2					
	A	S SINISTRA COUNTER CLOCKWISE	3					
	AQ	R** REVERSIBILE REVERSIBLE	4					
	A2		5					
			6					
			7					
			9					
			11					
			13					
			16					
			20					

<p><b>Guarnizioni / Seals</b></p> <p>omit (T range = -10°C + 80°C)</p> <p>V</p> <p>H</p> <p>...</p>
<p><b>Opzioni / Options</b></p> <p>TR</p> <p>RA</p> <p>...</p>
<p><b>Drenaggio (solo per rotazione R)</b> <i>Drain (only for R rotation)</i></p> <p>E0 = drenaggio interno/internal drain</p> <p>E1 = drenaggio esterno/external drain G1/4</p> <p>*** E2 = drenaggio esterno/external drain 9/16-18 UNF</p> <p>...</p> <p>(*) = campi da specificare se diversi dallo standard "tipo pompa" / to be specified if different from standard pump type</p> <p>(**) = La rotazione reversibile R è disponibile per tutte le taglie indicate / R rotation is available for all listed displacements</p> <p>(***) = La porta di drenaggio "E2" è lavorata secondo la specifica SAE J1926/1 (ISO 11926-1) relativa a porte filettate con tenuta O-ring. Profondità utile 12,7 mm. / "E2" drain port is machined in compliance with threaded port with O-ring seal in truncated housing SAE J1926/1 (ISO 11926-1). Thread depth 12,7 mm.</p>

#### Tipi Pompa Standard / Pump Standard Types

omit	= flangia europea + albero T0 + porte E + guarnizioni standard / european flange + shaft T0 + ports E + standard seals
A	= flangia A + albero C1 + porte FA + guarnizioni standard / flange A + shaft C1 + ports FA + standard seals
AQ	= flangia AQ + albero C2 + porte FA + guarnizioni standard / flange AQ + shaft C2 + ports FA + standard seals
A2	= flangia A2 + albero C3 + porte FA + guarnizioni standard / flange A + shaft C3 + ports FA + standard seals

#### Esempi / Examples:

GHP1-D-2 =	pompa destra, 1.4 cc/rev, flangia europea, albero conico 1:8, porte flangiate tipo E, guarnizioni standard clockwise rotation, 1.4 cc/rev, european flange, 1:8 tapered shaft, flanged ports E type, standard seals
GHP1-D-2-FG-V =	pompa destra, 1.4 cc/rev, flangia europea, albero conico 1:8, porte GAS (FG), guarnizioni per alta temperatura (V) clockwise rotation, 1.4 cc/rev, european flange, 1:8 tapered shaft, threaded ports (FG), high temperature seals (V)
GHP1A-D-2-S1 =	pompa destra, 1.4 cc/rev, flangia SAE A-A 2 fori, albero scanalato (S1), porte filettate (FA), guarnizioni standard clockwise rotation, 1.4 cc/rev, SAE A-A 2 bolt flange, splined shaft 9T (S1), threaded ports (FA), standard seals

## Pompe ad ingranaggi gear pumps

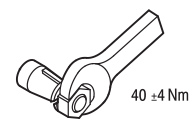
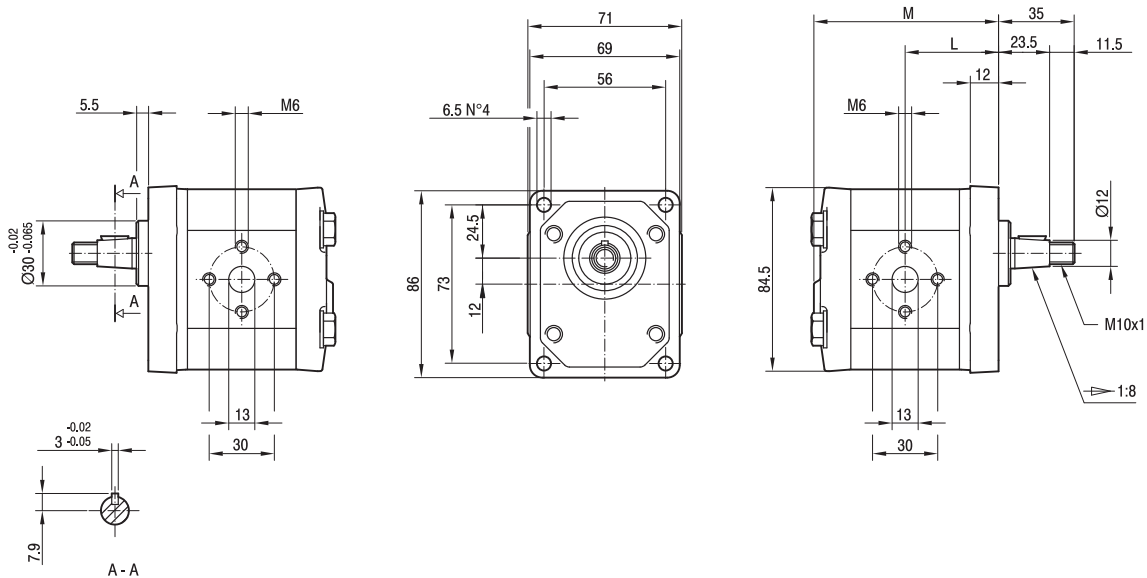
### GHP1

Parti accessorie a corredo della pompa standard: linguetta a disco (codice 522054), dado M10x1 (codice 523015), rosetta elastica spaccata (codice 523004).  
 Porte standard: filetti M6 profondità utile 13 mm.

Accessories supplied with the standard pump: woodruff key (code 522054), M10x1 exagonal nut (code 523015), washer (code 523004).  
 Standard ports: M6 threads depth 13 mm.

MANDATA  
OUTLET

ASPIRAZIONE  
INLET



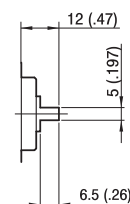
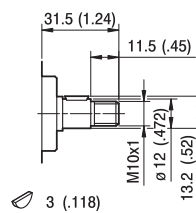
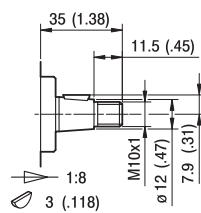
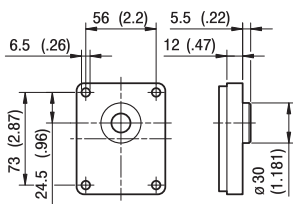
TIPO TYPE	CILINDRATA DISPLACEMENT	PORTATA a 1500 giri/min FLOW at 1500 rev/min	PRESSIONI MASSIME MAX PRESSURE			VELOCITÀ MASSIMA MAX SPEED	DIMENSIONI DIMENSIONS	
			P <sub>1</sub>	P <sub>2</sub>	P <sub>3</sub>		L	M
	cm <sup>3</sup> /giro [cm <sup>3</sup> /rev]	litri/min [litres/min]	bar	bar	bar	giri/min [rpm]	mm	mm
GHP1-D-2	1,4	2,0	270	290	310	6000	40	79
GHP1-D-3	2,1	2,9	270	290	310	6000	41	81
GHP1-D-4	2,8	3,9	270	290	310	5000	42	83
GHP1-D-5	3,5	4,9	270	290	310	5000	43	85
GHP1-D-6	4,1	5,9	270	290	310	4000	44	87
GHP1-D-7	5,2	7,4	260	275	290	4000	45,5	90
GHP1-D-9	6,2	8,8	260	275	290	3800	47	93
GHP1-D-11	7,6	10,8	230	245	260	3200	49	97
GHP1-D-13	9,3	13,3	210	225	240	2600	51,5	102
GHP1-D-16	11,0	15,7	200	215	230	2200	54	107
GHP1-D-20	13,8	19,7	180	195	210	1800	58	115

## Pompe ad ingranaggi gear pumps

### GHP1

#### FLANGE / FLANGES

#### ALBERI / SHAFTS



**TO**

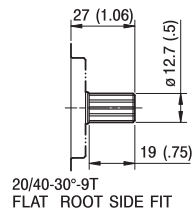
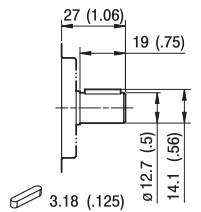
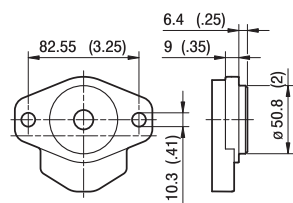
Coppia Max  
Max Torque 90 Nm

**CO**

Coppia Max  
Max Torque 25 Nm

**G0**

Coppia Max  
Max Torque 35 Nm

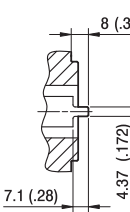
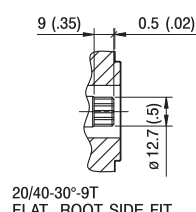
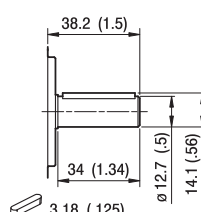
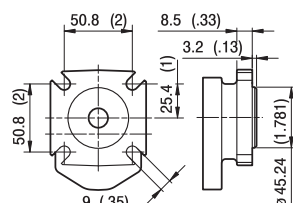


**C1**

Coppia Max  
Max Torque 55 Nm

**S1**

Coppia Max  
Max Torque 55 Nm



**C2**

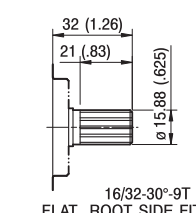
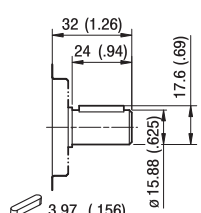
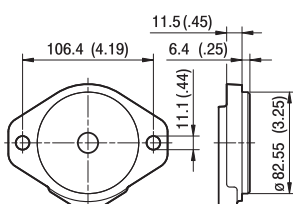
Coppia Max  
Max Torque 95 Nm

**S2**

Coppia Max  
Max Torque 55 Nm

**G1**

Coppia Max  
Max Torque 25 Nm



**C3**

Coppia Max  
Max Torque 105 Nm

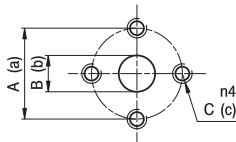
**S3**

Coppia Max  
Max Torque 110 Nm

## Pompe ad ingranaggi gear pumps

### GHP1

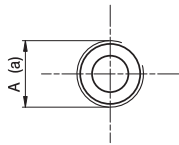
#### PORTE / PORTS



**E**

TIPO TYPE	ASPIRAZIONE INLET			MANDATA OUTLET		
	A	B	C	a	b	c
GHP1...2÷GHP1...20	30	13	M6	30	13	M6

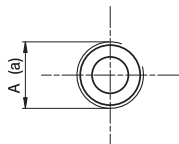
I valori delle coppie di serraggio delle viti presenti nel kit raccordo sono indicate a pag 55 (capitolo accessori).  
Tightening torques of the fittings screws are specified on page 55 (accessories section).



**FG**

TIPO TYPE	ASPIRAZIONE INLET	MANDATA OUTLET
	A	a
GHP1...2 ÷ GHP1...5	G1/2	G3/8
GHP1...6÷GHP1...20	G1/2	G1/2

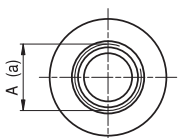
Raccordo G1/2 coppia di serraggio massima 50 Nm. Raccordo G3/8 coppia di serraggio massima 35 Nm.  
Consigliamo di richiedere conferma al fornitore del raccordo.  
Tightening torques for G1/2 fitting: 50 Nm. Tightening torques for G3/8 fitting: 35 Nm. Please check with the fittings suppliers.



**FC**

TIPO TYPE	ASPIRAZIONE INLET	MANDATA OUTLET
	A	a
GHP1...2÷GHP1...20	Rc1/2	Rc1/2

Raccordo Rc1/2 coppia di serraggio massima 50 Nm.  
Consigliamo di richiedere conferma al fornitore del raccordo.  
Tightening torques for Rc1/2 fitting: 50 Nm. Please check with the fittings suppliers.



STANDARD SAE J1926/1

**FA**

TIPO TYPE	ASPIRAZIONE INLET	MANDATA OUTLET
	A	a
GHP1...2 ÷ GHP1...9	3/4-16 UNF	9/16-18 UNF
GHP1...11÷GHP1...20	7/8-14 UNF	3/4-16 UNF

Raccordo 9/16-18 UNF coppia di serraggio massima 30 Nm. Raccordo 3/4-16 UNF coppia di serraggio massima 60 Nm.  
Raccordo 7/8-14 UNF coppia di serraggio massima 70 Nm. Consigliamo di richiedere conferma al fornitore del raccordo.  
Tightening torques for 9/16-18 UNF fitting: 30 Nm. Tightening torques for 3/4-16 UNF fitting: 60 Nm.  
Tightening torques for 7/8-14 UNF fitting: 70 Nm. Please check with the fittings suppliers.

**\*** Nel caso di funzionamento a pressioni elevate e intermittenti è possibile una riduzione della resistenza a fatica del corpo.  
A reduction of body's fatigue strength may occur if the pump is working at elevated and intermittent pressures.