

Neuheit 2024-02 | 2024-26

SCHLAUCHANSCHLUSS BM metrisch / BSPP

Material und technische Angaben

- Material: **Edelstahl (1.4571)**
- Anschluss (m): **Aussengewinde metrisch, 60° Innenkonus**
Anschluss G: **Aussengewinde BSPP (zylindrisch), 60° Innenkonus**



DN Schlauch mm	Gewinde (m) G	SW mm	Prod-No	Art-No
metrisch				
2	M3	4,5	I-MM3-DN2	736339
3	M3	4,5	I-MM3-DN3	736340
4	M5	7	I-MM5-DN4	736341
6	M5	7	I-MM5-DN6	736342

DN Schlauch mm	Gewinde (m) G	SW mm	Prod-No	Art-No
BSPP zylindrisch				
4	G1/8-28	14	I-1/8BM-DN4	736343
6	G1/8-28	14	I-1/8BM-DN6	736344
8	G1/8-28	14	I-1/8BM-DN8	736345
9	G1/8-28	14	I-1/8BM-DN9	736346
4	G1/4-19	17	I-1/4BM-DN4	736347
6	G1/4-19	17	I-1/4BM-DN6	736348
8	G1/4-19	17	I-1/4BM-DN8	736349
9	G1/4-19	17	I-1/4BM-DN9	736350
10	G1/4-19	17	I-1/4BM-DN10	736351
13	G1/4-19	17	I-1/4BM-DN13	736352
4	G3/8-19	19	I-3/8BM-DN4	736353
6	G3/8-19	19	I-3/8BM-DN6	736354
8	G3/8-19	19	I-3/8BM-DN8	736355
9	G3/8-19	19	I-3/8BM-DN9	736356
10	G3/8-19	19	I-3/8BM-DN10	736357
13	G3/8-19	19	I-3/8BM-DN13	736358

DN Schlauch mm	Gewinde (m) G	SW mm	Prod-No	Art-No
6	G1/2-14	24	I-1/2BM-DN6	736359
8	G1/2-14	24	I-1/2BM-DN8	736360
9	G1/2-14	24	I-1/2BM-DN9	736361
10	G1/2-14	24	I-1/2BM-DN10	736362
13	G1/2-14	24	I-1/2BM-DN13	736363
16	G1/2-14	24	I-1/2BM-DN16	736364
19	G1/2-14	24	I-1/2BM-DN19	736365
9	G3/4-14	30	I-3/4BM-DN9	736366
13	G3/4-14	30	I-3/4BM-DN13	736367
16	G3/4-14	30	I-3/4BM-DN16	736368
19	G3/4-14	30	I-3/4BM-DN19	736369
25	G3/4-14	30	I-3/4BM-DN25	736370
19	G1-11	36	I-1BM-DN19	736371
25	G1-11	36	I-1BM-DN25	736372
32	G1-11	36	I-1BM-DN32	736373
32	G1 1/4-11	42	I-11/4BM-DN32	736374
38	G1 1/4-11	42	I-11/4BM-DN38	736375
32	G1 1/2-11	48	I-11/2BM-DN32	736376
38	G1 1/2-11	48	I-11/2BM-DN38	736377
50	G1 1/2-11	52	I-11/2BM-DN50	736378
50	G2-11	70	I-2BM-DN50	736379

Neuheit 2024-02 | 2024-26

SCHLAUCHANSCHLUSS BMT BSPT

Material und technische Angaben

- Material: **Edelstahl (1.4408)**
- Anschluss R: **Aussengewinde BSPT (konisch)**



DN Schlauch mm	Gewinde R	SW mm	Prod-No	Art-No
9	R1/4-19	14	I-1/4BMT-DN9	736380
9	R3/8-19	17	I-3/8BMT-DN9	736381
13	R3/8-19	17	I-3/8BMT-DN13	736382
13	R1/2-14	22	I-1/2BMT-DN13	736383
19	R1/2-14	22	I-1/2BMT-DN19	736384
19	R3/4-14		I-3/4BMT-DN19	736385
25	R1-11		I-1BMT-DN25	736386

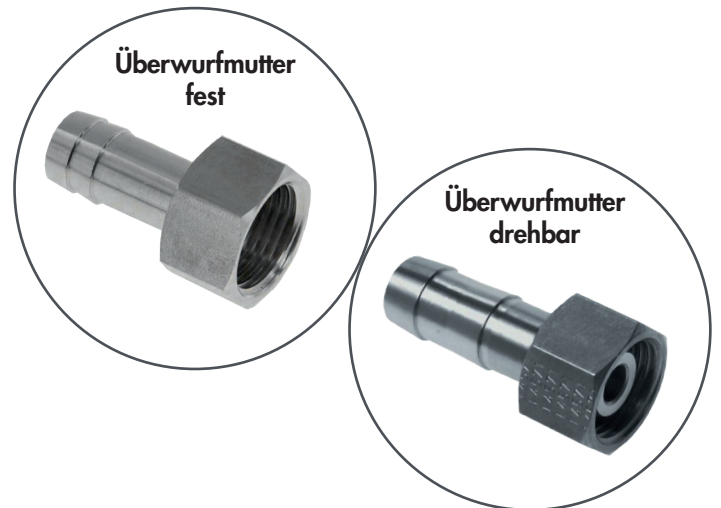
DN Schlauch mm	Gewinde R	SW mm	Prod-No	Art-No
32	R1 1/4-11		I-11/4BMT-DN32	736387
38	R1 1/2-11		I-11/2BMT-DN38	736388
50	R2-11		I-2BMT-DN50	736389
60	R2 1/2-11		I-21/2BMT-DN60	736390
75	R3-11		I-3BMT-DN75	736391
75	R3-11		I-3BMT-DN75	736391

Neuheit 2024-02 | 2024-26

SCHLAUCHANSCHLUSS BFF BSPP

Material und technische Angaben

- Material: **Edelstahl (1.4571)**
- Anschluss G: **Überwurfmutter fest (flachdichtend),
Überwurfmutter drehbar,
Innengewinde BSPP (zylindrisch),
60° Aussenkonus**



DN Schlauch mm	Gewinde G	SW mm	Prod-No	Art-No
Überwurfmutter fest				
6	G1/8-28	12	I-1/8BFF-F-DN6	736472
8	G1/8-28	12	I-1/8BFF-F-DN8	736473
9	G1/8-28	12	I-1/8BFF-F-DN9	736474
6	G1/4-19	17	I-1/4BFF-F-DN6	736475
8	G1/4-19	17	I-1/4BFF-F-DN8	736476
9	G1/4-19	17	I-1/4BFF-F-DN9	736477
10	G1/4-19	17	I-1/4BFF-F-DN10	736478
13	G1/4-19	17	I-1/4BFF-F-DN13	736479
6	G3/8-19	19	I-3/8BFF-F-DN6	736480
8	G3/8-19	19	I-3/8BFF-F-DN8	736481
9	G3/8-19	19	I-3/8BFF-F-DN9	736482
10	G3/8-19	19	I-3/8BFF-F-DN10	736483
13	G3/8-19	19	I-3/8BFF-F-DN13	736484
6	G1/2-14	24	I-1/2BFF-F-DN6	736485
8	G1/2-14	24	I-1/2BFF-F-DN8	736486
9	G1/2-14	24	I-1/2BFF-F-DN9	736487
10	G1/2-14	24	I-1/2BFF-F-DN10	736488
13	G1/2-14	24	I-1/2BFF-F-DN13	736489
13	G3/4-14	30	I-3/4BFF-F-DN13	736490
19	G3/4-14	30	I-3/4BFF-F-DN19	736491
19	G1-11	41	I-1BFF-F-DN19	736492
25	G1-11	36	I-1BFF-F-DN25	736493

DN Schlauch mm	Gewinde G	SW mm	Prod-No	Art-No
25	G1 1/4-11		I-11/4BFF-F-DN25	736494
32	G1 1/4-11	46	I-11/4BFF-F-DN32	736495
32	G1 1/2-11		I-11/2BFF-F-DN32	736496
38	G1 1/2-11	52	I-11/2BFF-F-DN38	736497
38	G2-11		I-2BFF-F-DN38	736498

Überwurfmutter drehbar

4	G1/8-28	12	I-1/8BFF-DN4	736499
6	G1/8-28	12	I-1/8BFF-DN6	736500
4	G1/4-19	17	I-1/4BFF-DN4	736501
6	G1/4-19	17	I-1/4BFF-DN6	736502
9	G1/4-19	17	I-1/4BFF-DN9	736503
4	G3/8-19	19	I-3/8BFF-DN4	736504
6	G3/8-19	19	I-3/8BFF-DN6	736505
9	G3/8-19	19	I-3/8BFF-DN9	736506
6	G1/2-14	24	I-1/2BFF-DN6	736507
9	G1/2-14	24	I-1/2BFF-DN9	736508
13	G1/2-14	24	I-1/2BFF-DN13	736509
13	G3/4-14	30	I-3/4BFF-DN13	736510
19	G3/4-14	30	I-3/4BFF-DN19	736511
19	G1-11	37	I-1BFF-DN19	736512
25	G1-11	37	I-1BFF-DN25	736513

Neuheit 2024-02 | 2024-26

DOPPELNIPPEL BM-BM



Material und technische Angaben

- Material: **Edelstahl (1.4571)**
- Anschluss m1/2: **Aussengewinde metrisch**, Innenkonus 60°
- Anschluss G1/2: **Aussengewinde BSPP** (zylindrisch), Innenkonus 60°

Gewinde G1	Gewinde m1	Gewinde G2	Gewinde m2	SW mm	Prod-No	Art-No
	M3			8	I-MM3-MM3	736392
	M5			8	I-MM5-MM3	736393
	M5			8	I-MM5-MM5	736394
G1/8-28			M5	14	I-1/8BM-MM5	736395
G1/8-28		G1/8-28		14	I-1/8BM-1/8BM	736396
G1/4-19			M5	17	I-1/4BM-MM5	736397
G1/4-19		G1/8-28		17	I-1/4BM-1/8BM	736398
G1/4-19		G1/4-19		17	I-1/4BM-1/4BM	736399
G3/8-19		G1/8-28		19	I-3/8BM-1/8BM	736400
G3/8-19		G1/4-19		19	I-3/8BM-1/4BM	736401
G3/8-19		G3/8-19		19	I-3/8BM-3/8BM	736402
G1/2-14		G1/4-19		24	I-1/2BM-1/4BM	736403
G1/2-14		G3/8-19		24	I-1/2BM-3/8BM	736404
G1/2-14		G1/2-14		24	I-1/2BM-1/2BM	736405
G3/4-14		G3/8-19		32	I-3/4BM-3/8BM	736406
G3/4-14		G1/2-14		32	I-3/4BM-1/2BM	736407
G3/4-14		G3/4-14		32	I-3/4BM-3/4BM	736408
G1-11		G1/2-14		36	I-1BM-1/2BM	736409
G1-11		G3/4-14		36	I-1BM-3/4BM	736410
G1-11		G1-11		36	I-1BM-1BM	736411
G1 1/4-11		G1-11		50	I-11/4BM-1BM	736412
G1 1/4-11		G1 1/4-11		50	I-11/4BM-11/4BM	736413
G1 1/2-11		G1 1/4-11		55	I-11/2BM-11/4BM	736414
G1 1/2-11		G1 1/2-11		55	I-11/2BM-11/2BM	736415
G2-11		G2-11		65	I-2BM-2BM	736416
G2 1/2-11		G2 1/2-11		77	I-21/2BM-21/2BM	736417
G3-11		G3-11		91	I-3BM-3BM	736418
G4-11		G4-11		117	I-4BM-4BM	736419

Neuheit 2024-02 | 2024-26

DOPPELNIPPEL BMT-BMT



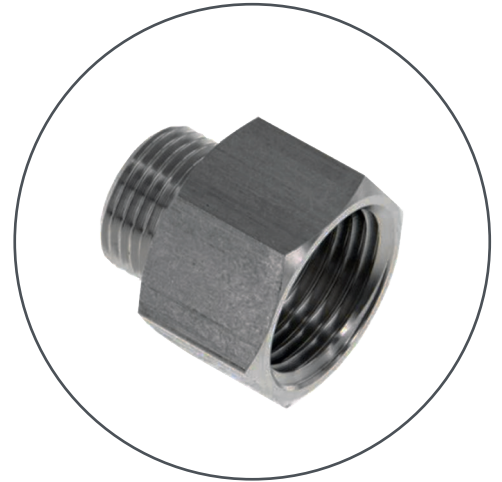
Material und technische Angaben

- Material: **Edelstahl (1.4408)**
- Anschluss R1: **Aussengewinde BSPT (konisch)**
- Anschluss R2: **Aussengewinde BSPT (konisch)**

Gewinde R1	Gewinde R2	SW mm	Prod-No	Art-No
R1/8-28	R1/8-28	12	I-1/8BMT-1/8BMT	736420
R1/4-19	R1/8-28	14	I-1/4BMT-1/8BMT	736421
R1/4-19	R1/4-19	14	I-1/4BMT-1/4BMT	736422
R3/8-19	R1/8-28	17	I-3/8BMT-1/8BMT	736423
R3/8-19	R1/4-19	17	I-3/8BMT-1/4BMT	736424
R3/8-19	R3/8-19	17	I-3/8BMT-3/8BMT	736425
R1/2-14	R1/4-19	22	I-1/2BMT-1/4BMT	736426
R1/2-14	R3/8-19	22	I-1/2BMT-3/8BMT	736427
R1/2-14	R1/2-14	22	I-1/2BMT-1/2BMT	736428
R3/4-14	R3/8-19	27	I-3/4BMT-3/8BMT	736429
R3/4-14	R1/2-14	27	I-3/4BMT-1/2BMT	736430
R3/4-14	R3/4-14	27	I-3/4BMT-3/4BMT	736431
R1-11	R3/8-19		I-1BMT-3/8BMT	736432
R1-11	R1/2-14	34	I-1BMT-1/2BMT	736433
R1-11	R3/4-14	34	I-1BMT-3/4BMT	736434
R1-11	R1-11	34	I-1BMT-1BMT	736435
R1 1/4-11	R3/4-14		I-11/4BMT-3/4BMT	736436
R1 1/4-11	R1-11		I-11/4BMT-1BMT	736437
R1 1/4-11	R1 1/4-11	46	I-11/4BMT-11/4BMT	736438
R1 1/2-11	R3/4-14		I-11/2BMT-3/4BMT	736439
R1 1/2-11	R1-11		I-11/2BMT-1BMT	736440
R1 1/2-11	R1 1/4-11		I-11/2BMT-11/4BMT	736441
R1 1/2-11	R1 1/2-11	50	I-11/2BMT-11/2BMT	736442
R2-11	R1-11		I-2BMT-1BMT	736443
R2-11	R1 1/4-11		I-2BMT-11/4BMT	736444
R2-11	R1 1/2-11		I-2BMT-11/2BMT	736445
R2-11	R2-11	62	I-2BMT-2BMT	736446
R2 1/2-11	R2-11		I-21/2BMT-2BMT	736447
R2 1/2-11	R2 1/2-11		I-21/2BMT-21/2BMT	736448
R3-11	R2-11		I-3BMT-2BMT	736449
R3-11	R2 1/2-11		I-3BMT-21/2BMT	736450
R3-11	R3-11		I-3BMT-3BMT	736451
R4-11	R3-11		I-4BMT-3BMT	736452
R4-11	R4-11		I-4BMT-4BMT	736453

Neuheit 2024-02 | 2024-26

REDUZIER-ADAPTER BM-BF



Material und technische Angaben

- Material: **Edelstahl (1.4571)**
- Anschluss m1: **Aussengewinde metrisch**
Anschluss m2: **Innengewinde metrisch**
Anschluss G1: **Aussengewinde BSPP (zylindrisch)**
Anschluss G2: **Innengewinde BSPP (zylindrisch)**

Gewinde G1	Gewinde m1	Gewinde G2	Gewinde m2	SW mm	Prod-No	Art-No
	M5		M3	7	I-MM5-FM3	736454
	M5	G1/8-28		14	I-MM5-1/8BF	736455
G1/8-28	M5			14	I-1/8BM-MM5	736456
G1/8-28		G1/4-19		17	I-1/8BM-1/4BF	736457
G1/4-19	M5			17	I-1/4BM-MM5	736458
G1/4-19		G1/8-28		17	I-1/4BM-1/8BF	736459
G1/4-19		G3/8-19		19	I-1/4BM-3/8BF	736460
G3/8-19		G1/8-28		19	I-3/8BM-1/8BF	736461
G3/8-19		G1/4-19		19	I-3/8BM-1/4BF	736462
G3/8-19		G1/2-14		24	I-3/8BM-1/2BF	736463
G1/2-14		G1/8-28		24	I-1/2BM-1/8BF	736464
G1/2-14		G1/4-19		24	I-1/2BM-1/4BF	736465
G1/2-14		G3/8-19		24	I-1/2BM-3/8BF	736466
G1/2-14		G3/4-14		32	I-1/2BM-3/4BF	736467
G3/4-14		G3/8-19		32	I-3/4BM-3/8BF	736468
G3/4-14		G1/2-14		32	I-3/4BM-1/2BF	736469
G1-11		G1/2-14		36	I-1BM-1/2BF	736470
G1-11		G3/4-14		36	I-1BM-3/4BF	736471

Nouveauté 2024-02 | 2024-26f

RACCORD DE TUYAU BM métrique / BSPP



Matériel et données techniques

- Matériel: **Acier inoxydable (1.4571)**
- Raccord (m): **Filetage extérieur métrique, cône intérieur 60°**
Raccord G: **Filetage extérieur BSPP (cylindrique), cône intérieur 60°**

DN Tuyau mm	Filetage (m) G	SW mm	Prod-No	Art-No
métrique				
2	M3	4,5	I-MM3-DN2	736339
3	M3	4,5	I-MM3-DN3	736340
4	M5	7	I-MM5-DN4	736341
6	M5	7	I-MM5-DN6	736342

DN Tuyau mm	Filetage (m) G	SW mm	Prod-No	Art-No
BSPP cylindrique				
4	G1/8-28	14	I-1/8BM-DN4	736343
6	G1/8-28	14	I-1/8BM-DN6	736344
8	G1/8-28	14	I-1/8BM-DN8	736345
9	G1/8-28	14	I-1/8BM-DN9	736346
4	G1/4-19	17	I-1/4BM-DN4	736347
6	G1/4-19	17	I-1/4BM-DN6	736348
8	G1/4-19	17	I-1/4BM-DN8	736349
9	G1/4-19	17	I-1/4BM-DN9	736350
10	G1/4-19	17	I-1/4BM-DN10	736351
13	G1/4-19	17	I-1/4BM-DN13	736352
4	G3/8-19	19	I-3/8BM-DN4	736353
6	G3/8-19	19	I-3/8BM-DN6	736354
8	G3/8-19	19	I-3/8BM-DN8	736355
9	G3/8-19	19	I-3/8BM-DN9	736356
10	G3/8-19	19	I-3/8BM-DN10	736357
13	G3/8-19	19	I-3/8BM-DN13	736358

DN Tuyau mm	Filetage (m) G	SW mm	Prod-No	Art-No
6	G1/2-14	24	I-1/2BM-DN6	736359
8	G1/2-14	24	I-1/2BM-DN8	736360
9	G1/2-14	24	I-1/2BM-DN9	736361
10	G1/2-14	24	I-1/2BM-DN10	736362
13	G1/2-14	24	I-1/2BM-DN13	736363
16	G1/2-14	24	I-1/2BM-DN16	736364
19	G1/2-14	24	I-1/2BM-DN19	736365
9	G3/4-14	30	I-3/4BM-DN9	736366
13	G3/4-14	30	I-3/4BM-DN13	736367
16	G3/4-14	30	I-3/4BM-DN16	736368
19	G3/4-14	30	I-3/4BM-DN19	736369
25	G3/4-14	30	I-3/4BM-DN25	736370
19	G1-11	36	I-1BM-DN19	736371
25	G1-11	36	I-1BM-DN25	736372
32	G1-11	36	I-1BM-DN32	736373
32	G1 1/4-11	42	I-11/4BM-DN32	736374
38	G1 1/4-11	42	I-11/4BM-DN38	736375
32	G1 1/2-11	48	I-11/2BM-DN32	736376
38	G1 1/2-11	48	I-11/2BM-DN38	736377
50	G1 1/2-11	52	I-11/2BM-DN50	736378
50	G2-11	70	I-2BM-DN50	736379

Nouveauté 2024-02 | 2024-26f

RACCORD DE TUYAU BMT BSPT

Matériel et données techniques

- Matériel: **Acier inoxydable (1.4408)**
- Raccord R: **Filetage extérieur BSPT (conique)**



DN Tuyau mm	Filetage R	SW mm	Prod-No	Art-No
9	R1/4-19	14	I-1/4BMT-DN9	736380
9	R3/8-19	17	I-3/8BMT-DN9	736381
13	R3/8-19	17	I-3/8BMT-DN13	736382
13	R1/2-14	22	I-1/2BMT-DN13	736383
19	R1/2-14	22	I-1/2BMT-DN19	736384
19	R3/4-14		I-3/4BMT-DN19	736385
25	R1-11		I-1BMT-DN25	736386

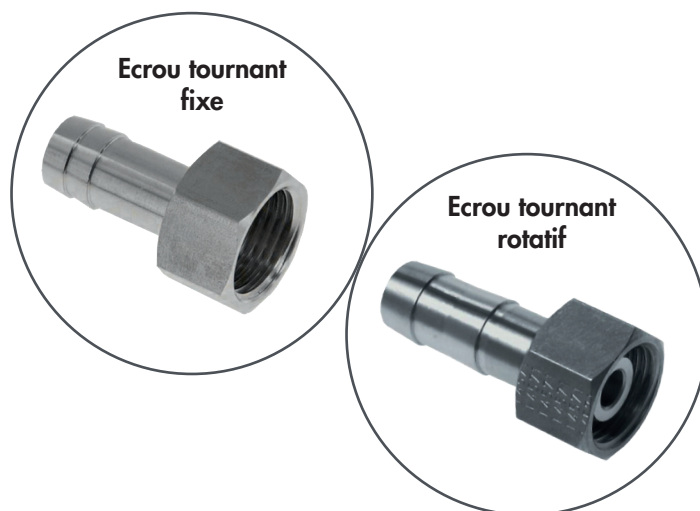
DN Tuyau mm	Filetage R	SW mm	Prod-No	Art-No
32	R1 1/4-11		I-11/4BMT-DN32	736387
38	R1 1/2-11		I-11/2BMT-DN38	736388
50	R2-11		I-2BMT-DN50	736389
60	R2 1/2-11		I-21/2BMT-DN60	736390
75	R3-11		I-3BMT-DN75	736391
75	R3-11		I-3BMT-DN75	736391

Nouveauté 2024-02 | 2024-26f

RACCORD DE TUYAU BFF BSPP

Matériel et données techniques

- Matériel: **Acier inoxydable (1.4571)**
- Raccord G: **Ecrou tournant fixe (à face plate),
écrou tournant rotatif,
filetage intérieur BSPP (cylindrique),
cône extérieur 60°**



DN Tuyau mm	Filetage G	SW mm	Prod-No	Art-No
Ecrou tournant fixe				
6	G1/8-28	12	I-1/8BFF-F-DN6	736472
8	G1/8-28	12	I-1/8BFF-F-DN8	736473
9	G1/8-28	12	I-1/8BFF-F-DN9	736474
6	G1/4-19	17	I-1/4BFF-F-DN6	736475
8	G1/4-19	17	I-1/4BFF-F-DN8	736476
9	G1/4-19	17	I-1/4BFF-F-DN9	736477
10	G1/4-19	17	I-1/4BFF-F-DN10	736478
13	G1/4-19	17	I-1/4BFF-F-DN13	736479
6	G3/8-19	19	I-3/8BFF-F-DN6	736480
8	G3/8-19	19	I-3/8BFF-F-DN8	736481
9	G3/8-19	19	I-3/8BFF-F-DN9	736482
10	G3/8-19	19	I-3/8BFF-F-DN10	736483
13	G3/8-19	19	I-3/8BFF-F-DN13	736484
6	G1/2-14	24	I-1/2BFF-F-DN6	736485
8	G1/2-14	24	I-1/2BFF-F-DN8	736486
9	G1/2-14	24	I-1/2BFF-F-DN9	736487
10	G1/2-14	24	I-1/2BFF-F-DN10	736488
13	G1/2-14	24	I-1/2BFF-F-DN13	736489
13	G3/4-14	30	I-3/4BFF-F-DN13	736490
19	G3/4-14	30	I-3/4BFF-F-DN19	736491
19	G1-11	41	I-1BFF-F-DN19	736492
25	G1-11	36	I-1BFF-F-DN25	736493

DN Tuyau mm	Filetage G	SW mm	Prod-No	Art-No
25	G1 1/4-11		I-11/4BFF-F-DN25	736494
32	G1 1/4-11	46	I-11/4BFF-F-DN32	736495
32	G1 1/2-11		I-11/2BFF-F-DN32	736496
38	G1 1/2-11	52	I-11/2BFF-F-DN38	736497
38	G2-11		I-2BFF-F-DN38	736498
Ecrou tournant rotatif				
4	G1/8-28	12	I-1/8BFF-DN4	736499
6	G1/8-28	12	I-1/8BFF-DN6	736500
4	G1/4-19	17	I-1/4BFF-DN4	736501
6	G1/4-19	17	I-1/4BFF-DN6	736502
9	G1/4-19	17	I-1/4BFF-DN9	736503
4	G3/8-19	19	I-3/8BFF-DN4	736504
6	G3/8-19	19	I-3/8BFF-DN6	736505
9	G3/8-19	19	I-3/8BFF-DN9	736506
6	G1/2-14	24	I-1/2BFF-DN6	736507
9	G1/2-14	24	I-1/2BFF-DN9	736508
13	G1/2-14	24	I-1/2BFF-DN13	736509
13	G3/4-14	30	I-3/4BFF-DN13	736510
19	G3/4-14	30	I-3/4BFF-DN19	736511
19	G1-11	37	I-1BFF-DN19	736512
25	G1-11	37	I-1BFF-DN25	736513

Nouveauté 2024-02 | 2024-26f

RACCORD DOUBLE BM-BM



Matériel et données techniques

- Matériel: **Acier inoxydable (1.4571)**
- Raccord m1/2: **Filetage extérieur métrique, cône intérieur 60°**
- Raccord G1/2: **Filetage extérieur BSPP (cylindrique), cône intérieur 60°**

Filetage G1	Filetage m1	Filetage G2	Filetage m2	SW mm	Prod-No	Art-No
	M3			8	I-MM3-MM3	736392
	M5			8	I-MM5-MM3	736393
	M5			8	I-MM5-MM5	736394
G1/8-28			M5	14	I-1/8BM-MM5	736395
G1/8-28		G1/8-28		14	I-1/8BM-1/8BM	736396
G1/4-19			M5	17	I-1/4BM-MM5	736397
G1/4-19		G1/8-28		17	I-1/4BM-1/8BM	736398
G1/4-19		G1/4-19		17	I-1/4BM-1/4BM	736399
G3/8-19		G1/8-28		19	I-3/8BM-1/8BM	736400
G3/8-19		G1/4-19		19	I-3/8BM-1/4BM	736401
G3/8-19		G3/8-19		19	I-3/8BM-3/8BM	736402
G1/2-14		G1/4-19		24	I-1/2BM-1/4BM	736403
G1/2-14		G3/8-19		24	I-1/2BM-3/8BM	736404
G1/2-14		G1/2-14		24	I-1/2BM-1/2BM	736405
G3/4-14		G3/8-19		32	I-3/4BM-3/8BM	736406
G3/4-14		G1/2-14		32	I-3/4BM-1/2BM	736407
G3/4-14		G3/4-14		32	I-3/4BM-3/4BM	736408
G1-11		G1/2-14		36	I-1BM-1/2BM	736409
G1-11		G3/4-14		36	I-1BM-3/4BM	736410
G1-11		G1-11		36	I-1BM-1BM	736411
G1 1/4-11		G1-11		50	I-11/4BM-1BM	736412
G1 1/4-11		G1 1/4-11		50	I-11/4BM-11/4BM	736413
G1 1/2-11		G1 1/4-11		55	I-11/2BM-11/4BM	736414
G1 1/2-11		G1 1/2-11		55	I-11/2BM-11/2BM	736415
G2-11		G2-11		65	I-2BM-2BM	736416
G2 1/2-11		G2 1/2-11		77	I-21/2BM-21/2BM	736417
G3-11		G3-11		91	I-3BM-3BM	736418
G4-11		G4-11		117	I-4BM-4BM	736419

Nouveauté 2024-02 | 2024-26f

RACCORD DOUBLE BMT-BMT



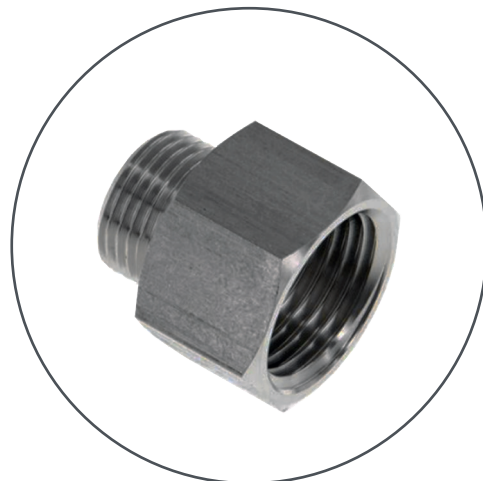
Matériel et données techniques

- Matériel: **Acier inoxydable (1.4408)**
- Raccord R1: **Filetage extérieur BSPT (conique)**
- Raccord R2: **Filetage extérieur BSPT (conique)**

Filetage R1	Filetage R2	SW mm	Prod-No	Art-No
R1/8-28	R1/8-28	12	I-1/8BMT-1/8BMT	736420
R1/4-19	R1/8-28	14	I-1/4BMT-1/8BMT	736421
R1/4-19	R1/4-19	14	I-1/4BMT-1/4BMT	736422
R3/8-19	R1/8-28	17	I-3/8BMT-1/8BMT	736423
R3/8-19	R1/4-19	17	I-3/8BMT-1/4BMT	736424
R3/8-19	R3/8-19	17	I-3/8BMT-3/8BMT	736425
R1/2-14	R1/4-19	22	I-1/2BMT-1/4BMT	736426
R1/2-14	R3/8-19	22	I-1/2BMT-3/8BMT	736427
R1/2-14	R1/2-14	22	I-1/2BMT-1/2BMT	736428
R3/4-14	R3/8-19	27	I-3/4BMT-3/8BMT	736429
R3/4-14	R1/2-14	27	I-3/4BMT-1/2BMT	736430
R3/4-14	R3/4-14	27	I-3/4BMT-3/4BMT	736431
R1-11	R3/8-19		I-1BMT-3/8BMT	736432
R1-11	R1/2-14	34	I-1BMT-1/2BMT	736433
R1-11	R3/4-14	34	I-1BMT-3/4BMT	736434
R1-11	R1-11	34	I-1BMT-1BMT	736435
R1 1/4-11	R3/4-14		I-11/4BMT-3/4BMT	736436
R1 1/4-11	R1-11		I-11/4BMT-1BMT	736437
R1 1/4-11	R1 1/4-11	46	I-11/4BMT-11/4BMT	736438
R1 1/2-11	R3/4-14		I-11/2BMT-3/4BMT	736439
R1 1/2-11	R1-11		I-11/2BMT-1BMT	736440
R1 1/2-11	R1 1/4-11		I-11/2BMT-11/4BMT	736441
R1 1/2-11	R1 1/2-11	50	I-11/2BMT-11/2BMT	736442
R2-11	R1-11		I-2BMT-1BMT	736443
R2-11	R1 1/4-11		I-2BMT-11/4BMT	736444
R2-11	R1 1/2-11		I-2BMT-11/2BMT	736445
R2-11	R2-11	62	I-2BMT-2BMT	736446
R2 1/2-11	R2-11		I-21/2BMT-2BMT	736447
R2 1/2-11	R2 1/2-11		I-21/2BMT-21/2BMT	736448
R3-11	R2-11		I-3BMT-2BMT	736449
R3-11	R2 1/2-11		I-3BMT-21/2BMT	736450
R3-11	R3-11		I-3BMT-3BMT	736451
R4-11	R3-11		I-4BMT-3BMT	736452
R4-11	R4-11		I-4BMT-4BMT	736453

Nouveauté 2024-02 | 2024-26f

ADAPTATEUR RÉDUITE BM-BF



Matériel et données techniques

- Matériel: **Acier inoxydable (1.4571)**
- Raccord m1: **Filetage extérieur métrique**
- Raccord m2: **Filetage intérieur métrique**
- Raccord G1: **Filetage extérieur BSPP (cylindrique)**
- Raccord G2: **Filetage intérieur BSPP (cylindrique)**

Filetage G1	Filetage m1	Filetage G2	Filetage m2	SW mm	Prod-No	Art-No
	M5		M3	7	I-MM5-FM3	736454
	M5	G1/8-28		14	I-MM5-1/8BF	736455
G1/8-28	M5			14	I-1/8BM-MM5	736456
G1/8-28		G1/4-19		17	I-1/8BM-1/4BF	736457
G1/4-19	M5			17	I-1/4BM-MM5	736458
G1/4-19		G1/8-28		17	I-1/4BM-1/8BF	736459
G1/4-19		G3/8-19		19	I-1/4BM-3/8BF	736460
G3/8-19		G1/8-28		19	I-3/8BM-1/8BF	736461
G3/8-19		G1/4-19		19	I-3/8BM-1/4BF	736462
G3/8-19		G1/2-14		24	I-3/8BM-1/2BF	736463
G1/2-14		G1/8-28		24	I-1/2BM-1/8BF	736464
G1/2-14		G1/4-19		24	I-1/2BM-1/4BF	736465
G1/2-14		G3/8-19		24	I-1/2BM-3/8BF	736466
G1/2-14		G3/4-14		32	I-1/2BM-3/4BF	736467
G3/4-14		G3/8-19		32	I-3/4BM-3/8BF	736468
G3/4-14		G1/2-14		32	I-3/4BM-1/2BF	736469
G1-11		G1/2-14		36	I-1BM-1/2BF	736470
G1-11		G3/4-14		36	I-1BM-3/4BF	736471